

Patient Instructions Stool for Occult Blood Collection

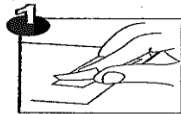
Clarity One-step Immuno Fecal Occult Blood Test Kit

- No Food, Vitamin, or Iron Restrictions

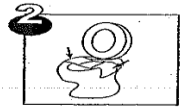
Patient Limitations: A specimen should not be collected from a patient with the following conditions that may interfere with the test results:

- Menstrual bleeding
- Bleeding hemorrhoids
- Constipation bleeding
- Urinary bleeding

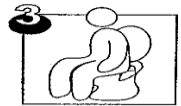
HOW TO USE THE COLLECTION PAPER



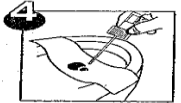
1. Peel off the liner covering the adhesive tape on each end of the collection paper.



2. Lift toilet seat. Unfold collection paper and place on rim of toilet bowl. Secure the adhesive tabs of the collection paper to the sides of the toilet rim.



3. Make bowel movement onto collection paper.

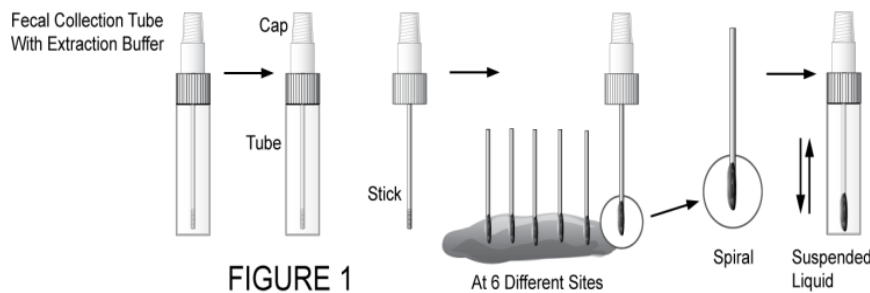


4. See illustrations for "HOW TO COLLECT STOOL SAMPLES". After sample is collected, release adhesive tabs and flush collection paper with stool . . .

Sample Collection and Preparation: (Figure 1)

It is advisable to avoid samples coming in contact with toilet bowl water.

1. Collection tube with buffer is stored at room temperature.
2. Loosen the cap of the fecal collection tube and remove applicator stick.
3. Do not pour out the liquid.
4. Randomly insert applicator stick into the fecal sample six times.
5. Return the applicator stick into the fecal collection tube and tighten the cap completely. Shake the tube to mix the sample with the extraction buffer.



ATTENTION: Please inform the patient as to the quantity of specimen needed as too much can result in test performance problems. Only the corkscrew spiral portion of the applicator stick needs to be filled. See diagram.

6. The fecal collection tubes will have a “flagged” label for patient identification.
7. Include date and time of collection and collector’s initials.
8. Send the specimen to the Laboratory in a specimen biohazard bag or the provided mailer.